

FINISH SCHEDULE:

FLOOR FINISH
A-EXPOSED CONCRETE SLAB (SEALER)
B-CARPET (CPT.)

BASE
0 - NONE
4 - 4" RUBBER BASE AT GYP. BOARD WALLS ONLY

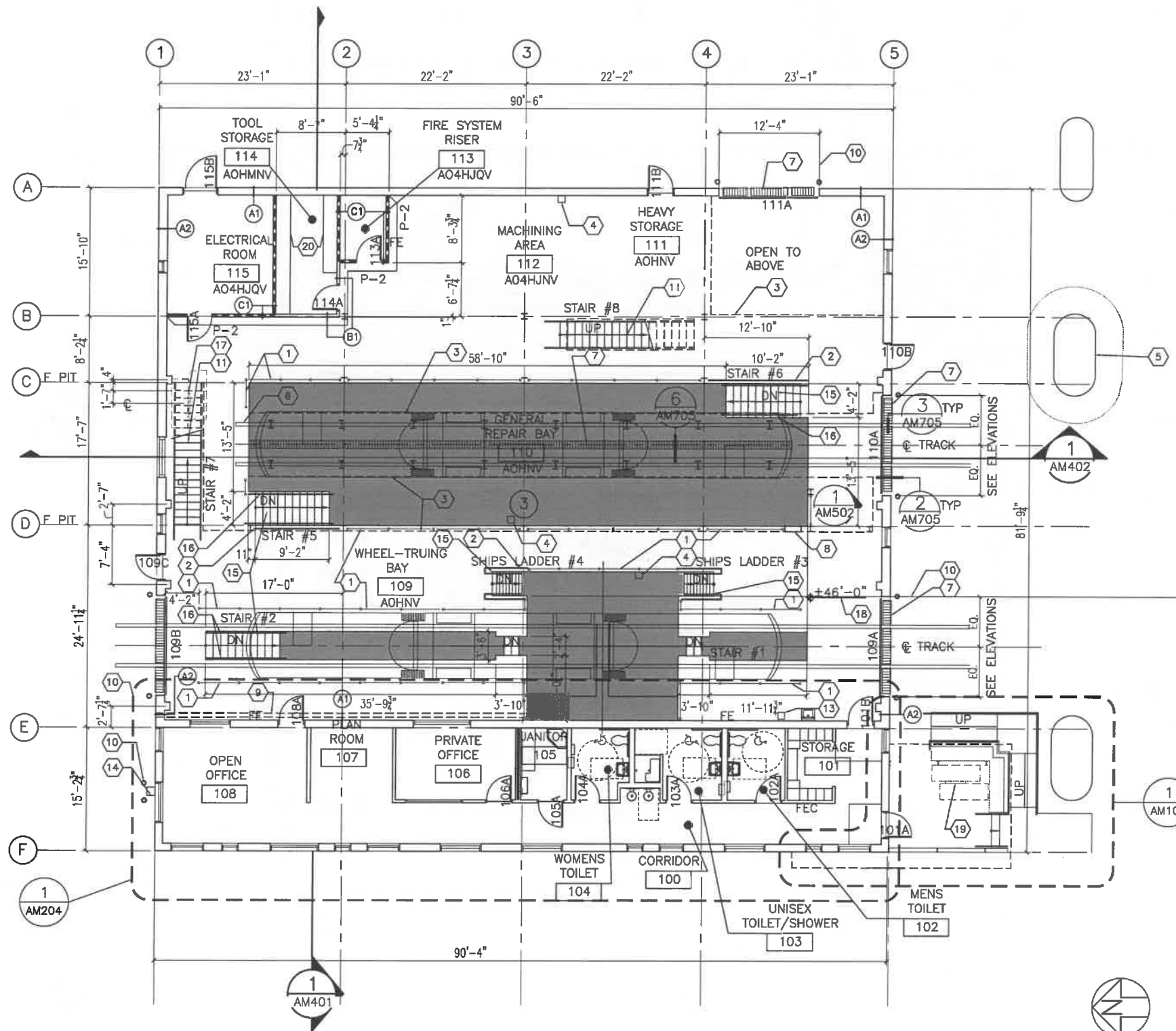
WALLS
G - CONCRETE MASONRY UNIT (CMU)
H - EXPOSED CONCRETE
J - GYPSUM BOARD AND PAINT
K - 4'-0" HIGH 4X4 TILE WAINSCOT WITH GYPSUM BOARD ABOVE EPOXY PAINT AT TOILET ROOMS, GYP. BOARD WALLS ONLY
M - PLYWOOD OVER GYPSUM BOARD WALL

CEILING
N - EXPOSED ROOF STRUCTURE
P - SUSPENDED ACOUSTICAL TILE - SEE SPEC.
Q - 1 HOUR CEILING ASSEMBLY

CEILING HEIGHT
9 - 9'-0"
V - VARIES

NOTE: SEE SHEET AM204 FOR PAINT LOCATIONS

ROOM NAME
108



FIRST FLOOR PLAN
SCALE: 1/8" = 1'-0"

1
AM201

KEYED NOTES

- PIPE/CABLE HANDRAILS EACH SIDE OF PITS - SEE DETAIL 1/AM708. SEE ALSO GENERAL NOTE 2 BELOW.
- FIXED HANDRAIL/GUARDRAIL - SEE DETAIL 2/AM708. SEE ALSO GENERAL NOTE 2 BELOW.
- LINE OF PLATFORM ABOVE
- EMERGENCY EYEWASH STATION, SEE PLUMBING DRAWINGS
- 1-405 BRIDGE COLUMNS, TYPICAL
- OWNER TO POSITION WHEEL STOPS TO PROVIDE 3" OF CLEARANCE BETWEEN TRAIN AND MEZZANINE LEVEL.
- TRENCH DRAIN OR FLOOR DRAIN, SEE PLUMBING DRAWINGS
- EGRESS LADDER, SEE DETAIL 5/AM708
- CHIP REMOVAL CONVEYOR, COORDINATE WITH PRECAST PANELS
- BOLLARDS, TYPICAL, SEE DETAIL 1/AM105
- STEEL STAIR, SEE SHEET AM602
- NOT USED
- EMERGENCY EYEWASH STATION/SHOWER, SEE PLUMBING DRAWINGS
- GAS METER, SEE PLUMBING DRAWINGS
- STEEL OR CONCRETE PIT STAIR, SEE SHEET AM601
- PIT STAIR HANDRAILS STOP FLUSH WITH SLAB, SEE SHEET AM601
- FLOOR MOUNTED BICYCLE RACKS (LONG TERM), SEE DETAIL 2/AM104
- ELEVATION CORRESPONDS TO 0'-0" ON THE EXTERIOR ELEVATIONS
- BIKE STAPLE RACK (SHORT TERM)
- 18" DEEP FLOOR MOUNTED TOOL STORAGE SHELVES, SEE EQUIPMENT DRAWINGS

GENERAL NOTES

- ALL INTERIOR WALLS TO EXTEND TO UNDERSIDE OF STRUCTURE U.O.N. - PROVIDE DEFLECTION HEADS AT TRACK
- AT ALL RAILINGS BETWEEN COLUMNS PROVIDE 5 EQUALLY SPACED POSTS. AT ALL OTHER LOCATIONS PROVIDE VERTICALS WITH 6'-0" SPACING MAXIMUM. SPACE MINIMUM 2" FROM ADJACENT OBSTRUCTIONS U.N.O.
- LOCATE CONTROL JOINTS ON THE CENTERLINE OF EACH COLUMN AND ALIGNED WITH PIT EDGE EACH WAY, TYPICAL.

SYMBOLS/LEGEND

- SHADING DENOTES DEPRESSED MAINTENANCE PIT
- (B1) WALL TYPE (SEE SHEET AM711)
- (A) INTERIOR WINDOW TYPE (SEE SHEET AM801)
- 8" CMU SHEAR WALL, SEE STRUCTURAL
- 1 HR. FIRE-RATED RM.
- FE FIRE EXTINGUISHER
- FEC FIRE EXTINGUISHER CABINET

RECORD DRAWING

THIS DOCUMENT WAS COMPLETED USING INFORMATION FROM OTHER SOURCES AND IS INTENDED TO BE USED FOR REFERENCE ONLY. FIELD SURVEYS ARE REQUIRED TO VERIFY THE ACCURACY OF THE INFORMATION SHOWN.

PREPARED BY WATERLEAF ARCHITECTURE MARCH 2012

DESIGNED BY
MM
DRAWN BY
MH
CHECKED BY
APPROVED BY

DATE APPROVED
DIV. ENGINEER



APPROVALS:

PRINCIPAL ENGINEER REG. PROF. ENGR. NO.

CITY ENGINEER REG. PROF. ENGR. NO.

CITY OF
PORTLAND
BUREAU OF
TRANSPORTATION

SAM ADAMS
STEVE TOWNSEN, P.E.

MAYOR
CITY ENGINEER

waterleaf
architecture, interiors & planning
URS

Portland
Streetcar

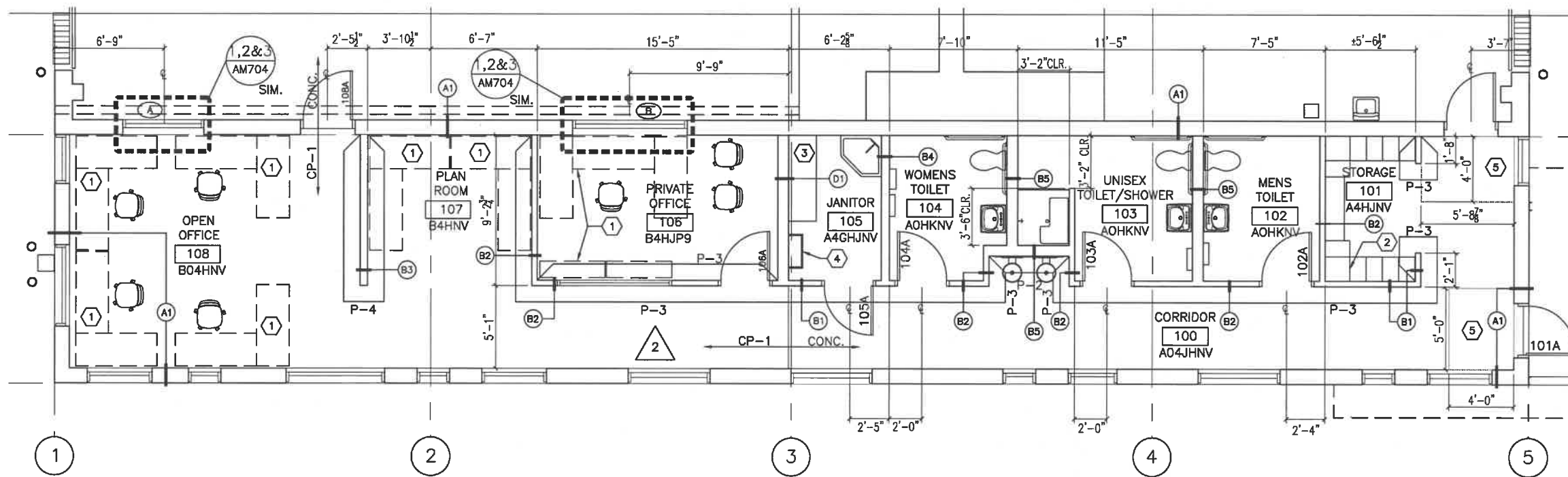
STREETCAR LOOP PROJECT
MAINTENANCE FACILITY EXPANSION
FIRST FLOOR PLAN

DWG NO.

AM201

SHEET NO.

8



ENLARGED FLOOR PLAN
SCALE: 1/4" = 1'-0"

1
AM201

KEYED NOTES

- 1 FURNITURE, N.I.C. PROVIDED BY OWNER.
- 2 LOCKERS RELOCATED FROM EXISTING MAINTENANCE FACILITY.
- 3 WALL MOUNTED SHELVES
- 4 ROOF ACCESS LADDER
- 5 RECESSED WALK OFF MAT, COORDINATE WITH CONCRETE SLAB

GENERAL NOTES

1. ALL INTERIOR WALLS TO EXTEND TO UNDERSIDE OF STRUCTURE U.N.O. - PROVIDE DEFLECTION HEADS
2. SEE ELECTRICAL AND MECHANICAL DRAWINGS FOR ADDITIONAL CEILING MOUNTED EQUIPMENT.

SYMBOLS/LEGEND

ROOM NAME ROOM NAME AND FINISH KEY, SEE SHEET AM201
108
A 4 G N 9

2x4 ACOUSTICAL CEILING GRID AT 9'-0" A.F.F.

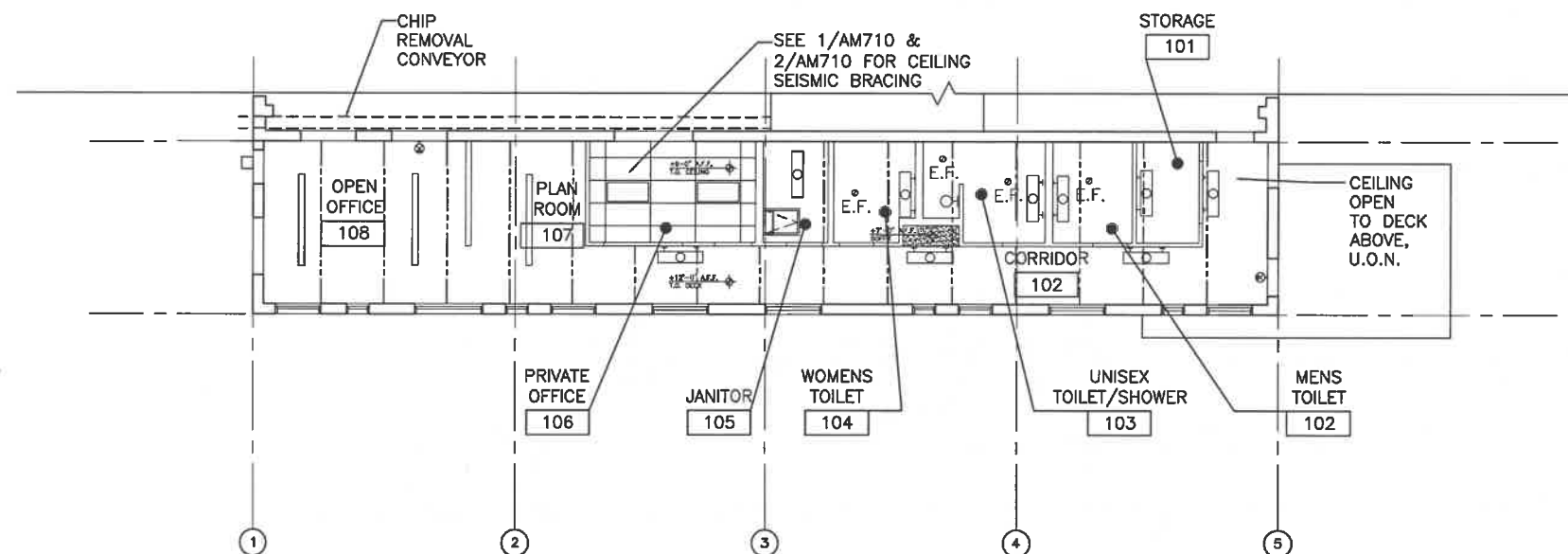
TRUSSES (SEE STRUCTURAL)

WALL MOUNTED EXIT SIGN

E.F. EXHAUST FAN

LIGHT FIXTURE (MOUNT AT 9'-0" TO BOTTOM OF LIGHT A.F.F. TYP. U.N.O.)

LIGHT FIXTURE ON EMERGENCY POWER



OFFICE REFLECTED CEILING PLAN
SCALE: 1/8" = 1'-0"

2
AM204

8' 4' 0' 8' 16'
SCALE: 1/8" = 1'-0"

RECORD DRAWING

THIS DOCUMENT WAS COMPLETED USING INFORMATION FROM OTHER SOURCES AND IS INTENDED TO BE USED FOR REFERENCE ONLY. FIELD SURVEYS ARE REQUIRED TO VERIFY THE ACCURACY OF THE INFORMATION SHOWN.

PREPARED BY WATERLEAF ARCHITECTURE MARCH 2012

DESIGNED BY MM
DRAWN BY MH
CHECKED BY
APPROVED BY



APPROVALS:

PRINCIPAL ENGINEER REG. PROF. ENGR. NO.

CITY ENGINEER REG. PROF. ENGR. NO.

CITY OF PORTLAND
BUREAU OF TRANSPORTATION

SAM ADAMS
STEVE TOWNSEN, P.E.

MAYOR
CITY ENGINEER

waterleaf
architecture, interiors & planning
URS

Portland
Streetcar

STREETCAR LOOP PROJECT
MAINTENANCE FACILITY EXPANSION
OFFICE REFLECTED CEILING PLAN

DWG NO. AM204
SHEET NO. 11

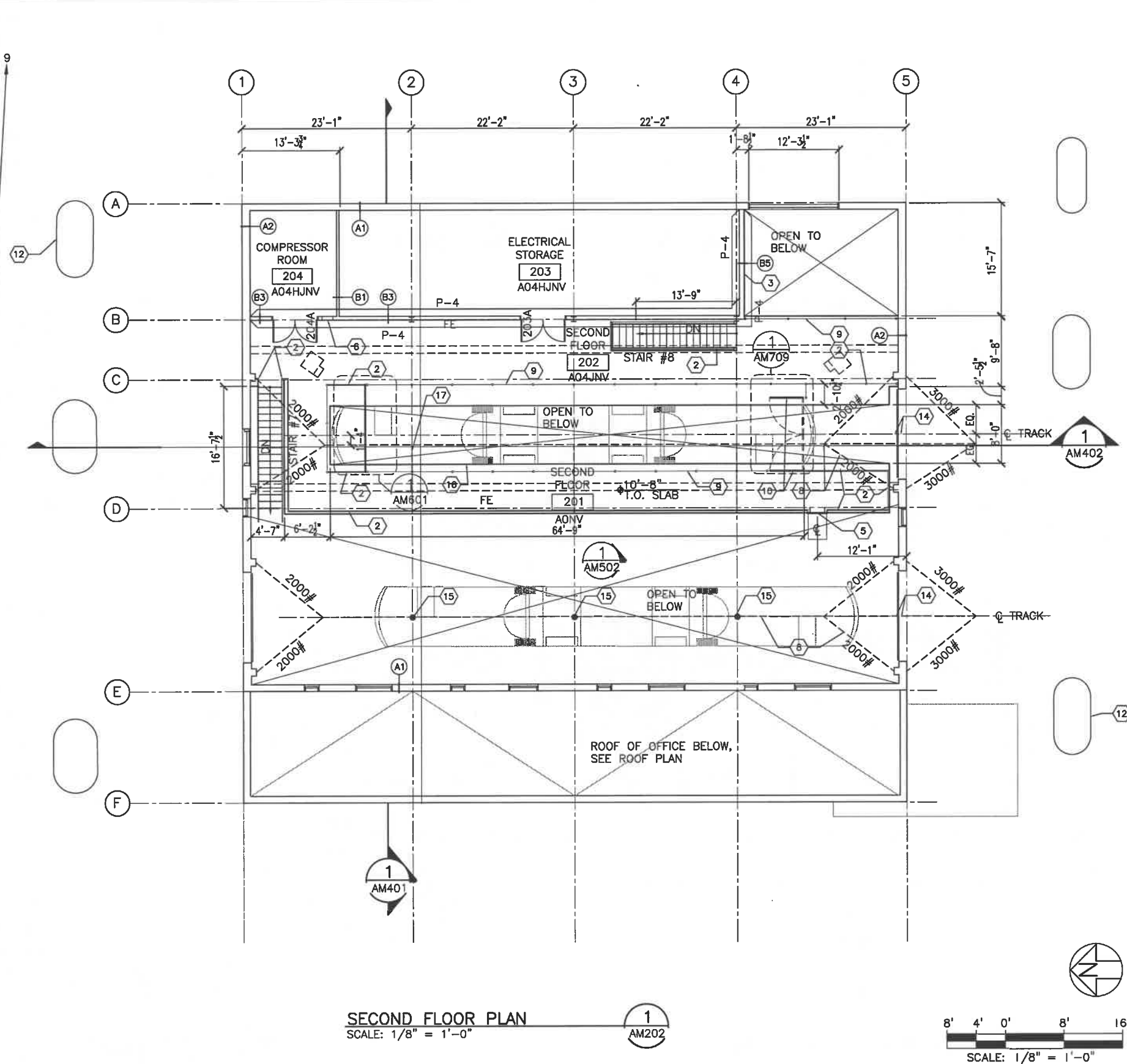
FLOOR FINISH _____ A 4 G N 9
A- EXPOSED CONCRETE SLAB (SEALER)
B- CARPET (CPT.)

BASE _____
0 - NONE
4 - 4" RUBBER BASE AT GYP. BOARD
WALLS ONLY

WALLS _____
G - CONCRETE MASONRY UNIT (CMU)
H - EXPOSED CONCRETE
J - GYPSUM BOARD AND PAINT
K - 4'-0" HIGH 4X4 TILE WAINSCOT
WITH GYPSUM BOARD ABOVE EPOXY
PAINT AT TOILET ROOMS, GYP. BOARD
WALLS ONLY
M - PLYWOOD OVER GYPSUM BOARD
WALL

CEILING _____
N - EXPOSED ROOF STRUCTURE
P - SUSPENDED ACOUSTICAL TILE - SEE
SPEC.

CEILING HEIGHT _____
9 - 9'-0"
V- VARIES



- 1 PIPE/CABLE HANDRAILS EACH SIDE OF PITS -- SEE DETAIL 1/AM708. SEE ALSO GENERAL NOTE 2 BELOW.
- 2 FIXED HANDRAIL/GUARDRAIL -- SEE DETAIL 2/AM708. SEE ALSO GENERAL NOTE 2 BELOW.
- 3 FULL HEIGHT WALL, DO NOT INSULATE. INCLUDE 8" BOX BEAM AT TOP OF WALL. PROVIDE BLOCK OUT FOR FUTURE DOUBLE DOOR AT CENTER OF WALL.
- 4 NOT USED
- 5 EGRESS LADDER, SEE DETAIL 5/AM708
- 6 MECHANICAL LOUVER, MOUNT 12" A.F.F. TO BOTTOM OF LOUVER, SEE MECHANICAL DRAWINGS
- 7 NOT USED
- 8 OCS LINES ABOVE, BY OTHERS
- 9 REMOVEABLE FABRIC MESH RAILING -- SEE DETAIL 3/AM708. SEE GENERAL NOTE 2 BELOW FOR SPACING OF VERTICAL POSTS.
- 10 SWING GATES WITH POWER INTERLOCKS
- 11 NOT USED
- 12 I-405 BRIDGE COLUMNS, TYPICAL
- 13 NOT USED
- 14 SHOP DOOR BRIDGE, TYPICAL, SEE OCS DRAWINGS
- 15 INSULATED C/W HANGER, ATTACHED TO ROOF BEAM, TYPICAL, BY OTHERS
- 16 LIGHT FIXTURES MOUNTED BELOW THE MEZZANINE SHALL BE MOUNTED ON THE TRACKSIDE OF MEZZANINE SUPPORT BEAM, TYPICAL AT BOTH SIDES OF MEZZANINE.
- 17 SEE LOOP PLANS FOR OCS ASSEMBLIES

1. ALL WALLS TO EXTEND TO UNDERSIDE OF STRUCTURE U.O.N. - PROVIDE DEFLECTION HEADS
2. AT ALL RAILINGS BETWEEN COLUMNS PROVIDE 5 EQUALLY SPACED POSTS. AT ALL OTHER LOCATIONS PROVIDE VERTICALS WITH 6'-0" SPACING MAXIMUM. SPACE MINIMUM 2" FROM ADJACENT OBSTRUCTIONS U.N.O.
3. LOCATE CONTROL JOINTS ON THE CENTERLINE OF EACH COLUMN EACH WAY, TYPICAL.

(B1) WALL TYPE (SEE SHEET AM711)
FE FIRE EXTINGUISHER
----- OCS LINES, BY OTHERS

THIS DOCUMENT WAS COMPLETED USING INFORMATION FROM OTHER SOURCES AND IS INTENDED TO BE USED FOR REFERENCE ONLY. FIELD SURVEYS ARE REQUIRED TO VERIFY THE ACCURACY OF THE INFORMATION SHOWN.

PREPARED BY WATERLEAF ARCHITECTURE MARCH 2012

DESIGNED BY MM	DATE APPROVED
DRAWN BY MH	DIV. ENGINEER
CHECKED BY	
APPROVED BY	



PRINCIPAL ENGINEER	REG. PROF. ENGR.	NO.
CITY ENGINEER	REG. PROF. ENGR.	NO.



SAM ADAMS
STEVE TOWNSEN, P.E.

MAYOR
CITY ENGINEER

waterleaf
multilayers, interfaces & planning

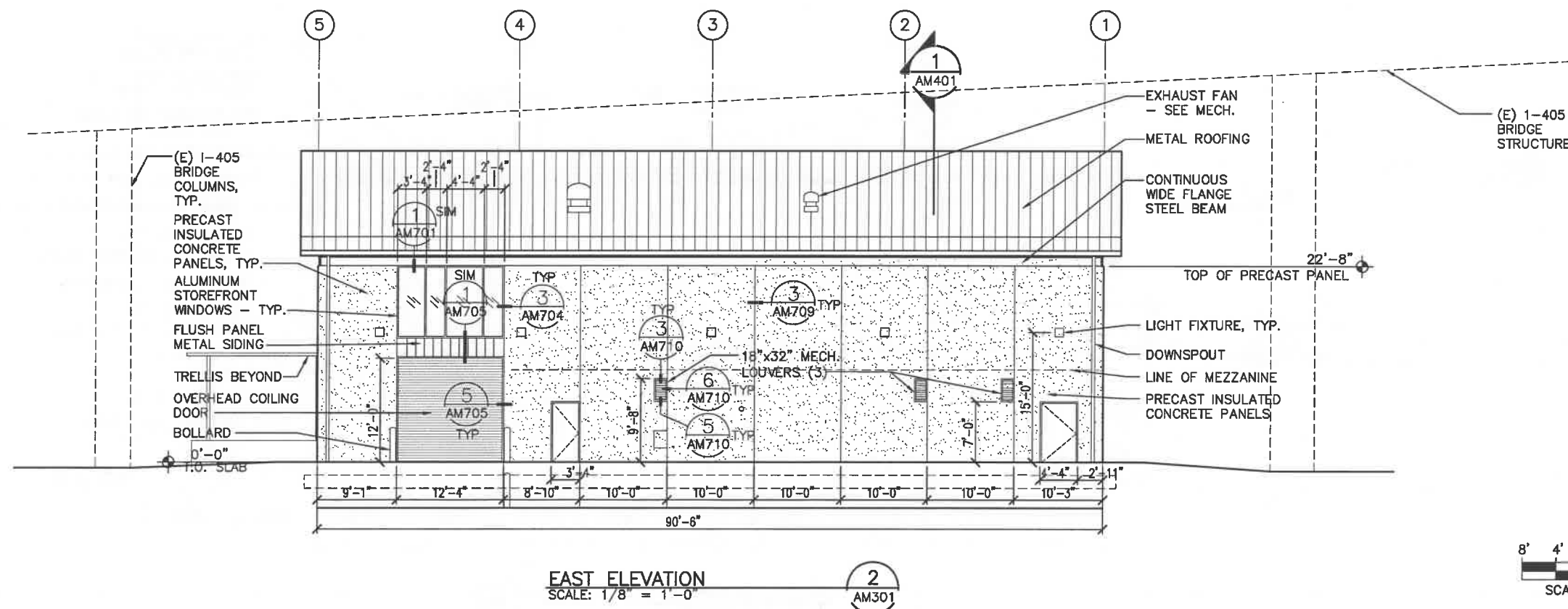


STREETCAR LOOP PROJECT
MAINTENANCE FACILITY EXPANSION
SECOND FLOOR PLAN

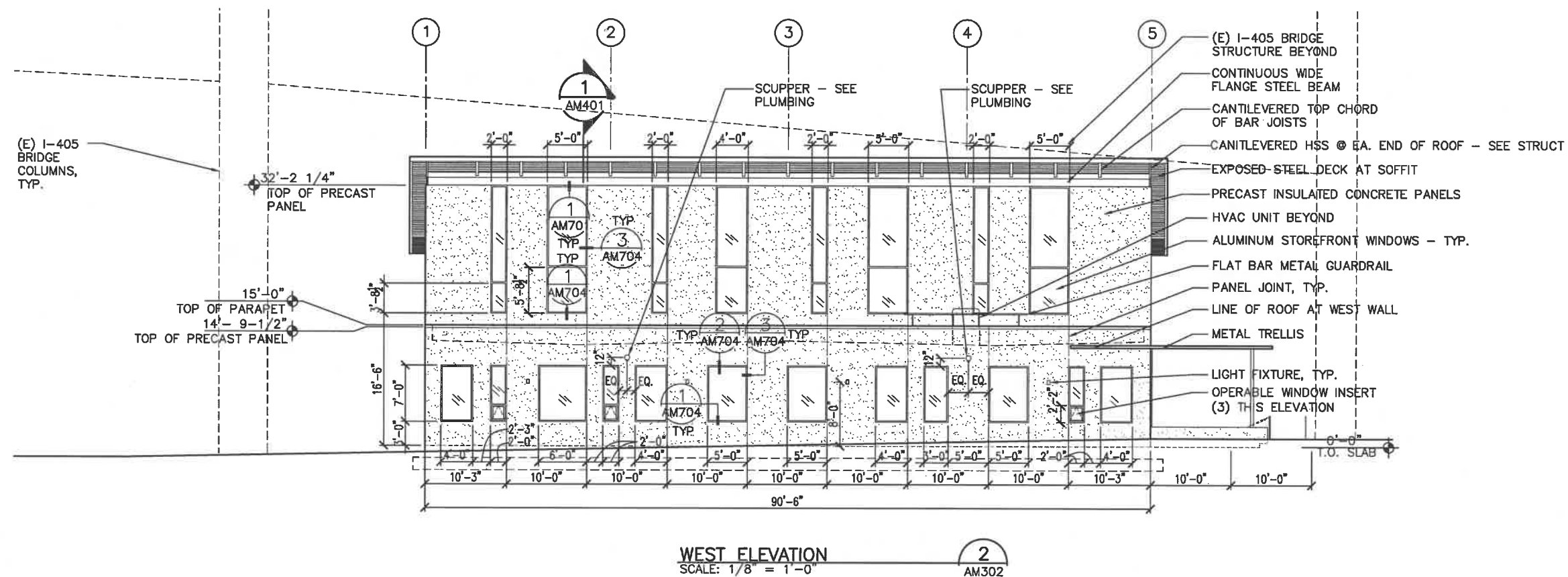
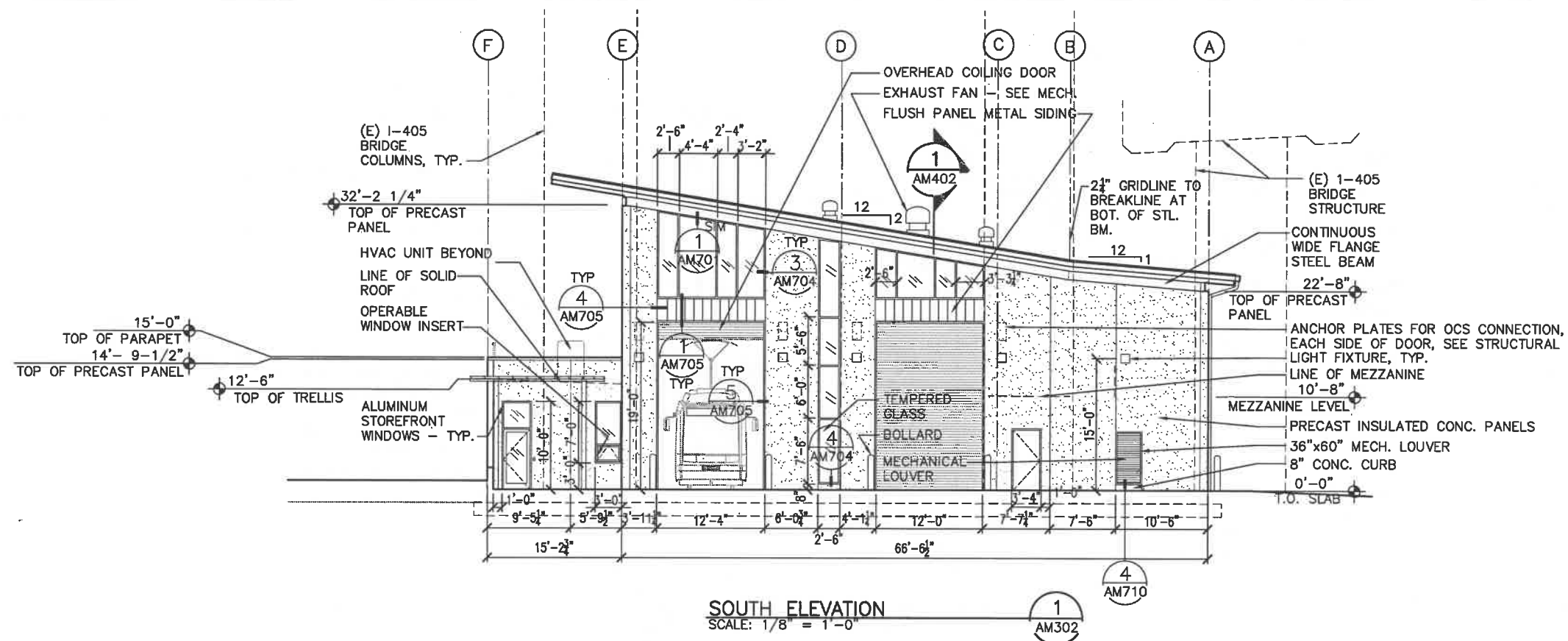
DWG NO.	
---------	--

AM202

SHEET NO.



WG NO.
AM301
SHEET NO.
12



8' 4' 0' 8' 16'

SCALE: $\frac{1}{8}" = 1'-0"$

RECORD DRAWING

THIS DOCUMENT WAS COMPLETED USING INFORMATION FROM OTHER SOURCES AND IS INTENDED TO BE USED FOR REFERENCE ONLY. FIELD SURVEYS ARE REQUIRED TO VERIFY THE ACCURACY OF THE INFORMATION SHOWN.

PREPARED BY WATERLEAF ARCHITECTURE MARCH 2012

DESIGNED BY MM	DATE APPROVED
DRAWN BY BS	DIV. ENGINEER
CHECKED BY	
APPROVED BY	

DATE APPROVED	
DIV. ENGINEER	



APPROVALS:

PRINCIPAL ENGINEER	REG. PROF. ENGR. NO.
--------------------	----------------------

CITY ENGINEER	REG. PROF. ENGR. NO.
---------------	----------------------



SAM ADAMS
STEVE TOWNSEN, P.E.

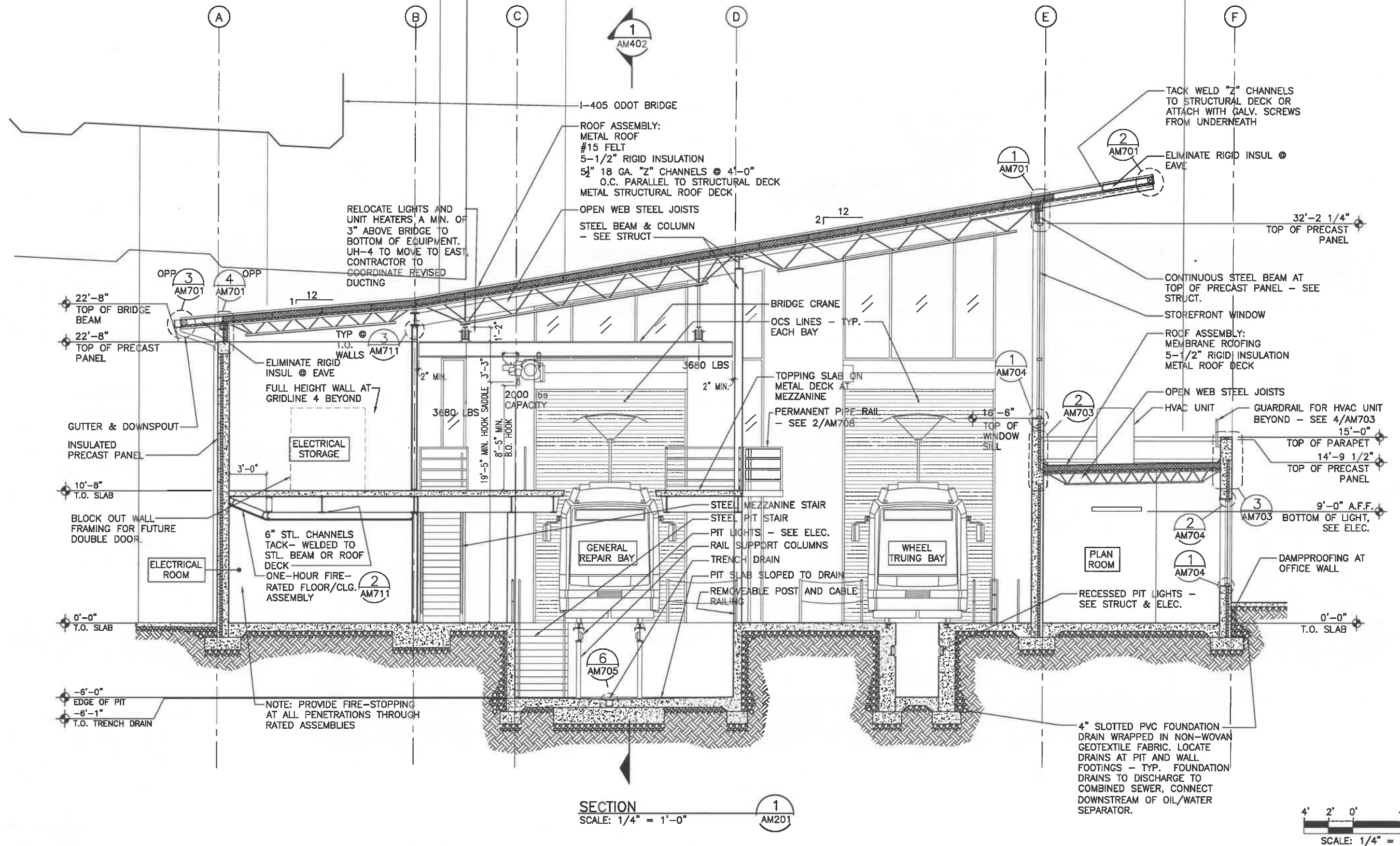
MAYOR
CITY ENGINEER



STREETCAR LOOP PROJECT
MAINTENANCE FACILITY EXPANSION
EXTERIOR ELEVATIONS

DWG NO.
AM302

SHEET NO.
13



RECORD DRAWING

THIS DOCUMENT WAS COMPLETED USING INFORMATION FROM OTHER SOURCES AND IS INTENDED TO BE USED FOR REFERENCE ONLY. FIELD SURVEYS ARE REQUIRED TO VERIFY THE ACCURACY OF THE INFORMATION SHOWN.

PREPARED BY WATERLEAF ARCHITECTURE MARCH 2012

DESIGNED BY	DATE APPROVED
BS	
DRAWN BY	DIV. ENGINEER
BS	
CHECKED BY	
APPROVED BY	



APPROVALS:

PRINCIPAL ENGINEER REG. PROF. ENGR. NO.

CITY ENGINEER REG. PROF. ENGR. NO.



SAM ADAMS
STEVE TOWNSEN, P.E.

MAYOR
CITY ENGINEER



STREETCAR LOOP PROJECT
MAINTENANCE FACILITY EXPANSION
BUILDING SECTIONS

DWG NO.
AM401
SHEET NO.
14